

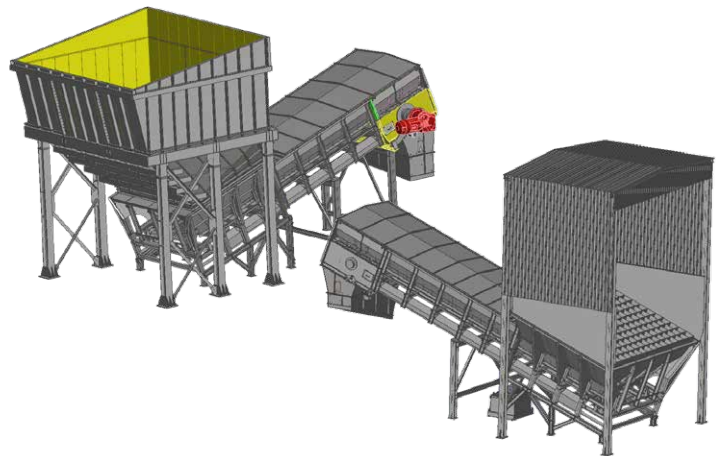


ABOUT WTW AMERICAS

WTW Americas leads the industry in designing and manufacturing advanced bulk material handling equipment. Renowned for our heavy-duty, precision-engineered solutions, we prioritize reliability and ease of maintenance through innovative bolted construction, enabling quick assembly and disassembly. In partnership with Gecos GmbH, WTW Americas German engineered equipment finds application in the cement, wallboard, power, mining, environmental, and chemical industries, delivering tailored systems that meet the toughest material handling challenges while ensuring long-term performance and operational efficiency.

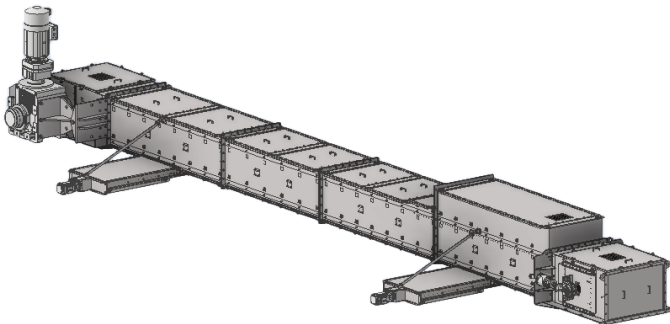
TRUCK DISCHARGE MACHINE

WTW's Truck Discharge Machine (TDM) is a uniquely designed machine that allows clients to receive bulk materials into their process with minimal civil work, and no need for continuous manpower, or other conveying systems. The TDM will accept a full truck load of material and can discharge from 0 to 1,200 t/h at constant or variable rates. This multifaceted machine can be customized to receive bulk material from barges, railcars, front loaders, and trucks, making it applicable to any industry.



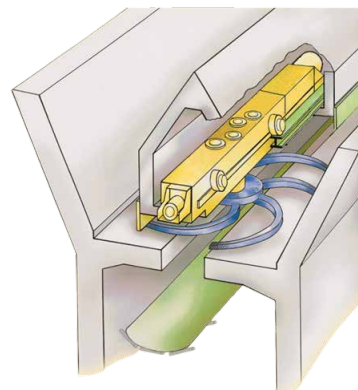
TKF CHAIN CONVEYOR

WTW's TKF Chain Conveyor is the most reliable, and durable system in any industry. TKF Chain Conveyors can be modified to be dust, and gas tight, as well as explosion-proof. Sticky, hot (up to 750° C), abrasive materials such as synthetic gypsum, sludge, or clinker are easily conveyed from 0 to 1,000 t/h, on single or double stand chains of 0.25 to 2 meters in width. TKF Chain Conveyors can evenly distribute materials into (or out of) hoppers, bins, or silos via leveling plates, and can be constructed into any configuration, even vertical. Chain Conveyors have also been used to unload railroad cars.



BUNKER DISCHARGE MACHINE

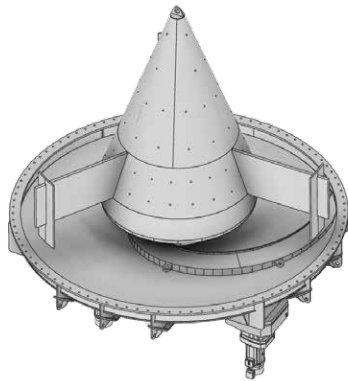
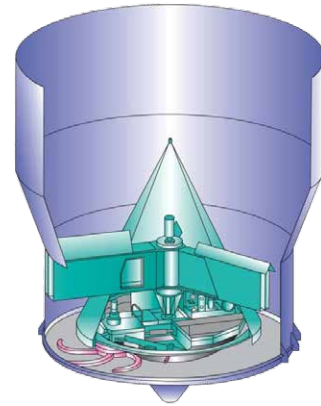
WTW's Bunker Discharge Machine (BDM) is available in a variety of designs and configurations to meet any application and can be used in various discharge or with reclaim operations. The BDM can be supplied to travel on rails, a festoon system, a VFD or can include an integrated weight feeder, allowing total flow control accuracies better than 1%. With capacities of 10 to 2,500 t/h, the BDM can reclaim and extract materials from any bunker, hopper, or large silo.



FOR ADDITIONAL INFORMATION PLEASE CONTACT OUR OFFICES.

ROTARY DISCHARGE MACHINE

WTW's Rotary Discharge Machine (RDM) is WTW's largest discharger system with material capacities up to 10,000 tonnes, and silo diameters from 5 to 12 meters. The RDM is the most effective in obtaining total mass flow of materials. The RDM is recommended in power, cement, wallboard, waste handling and other industries where non-free flowing, difficult materials are used, and where large single storage facilities are required.

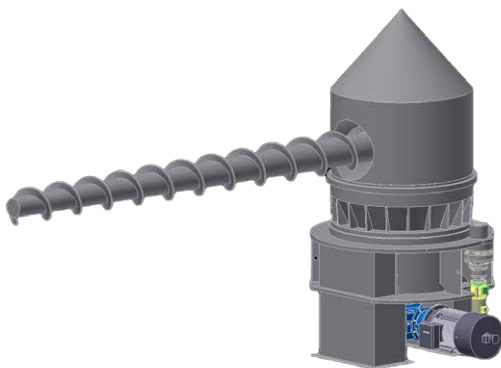
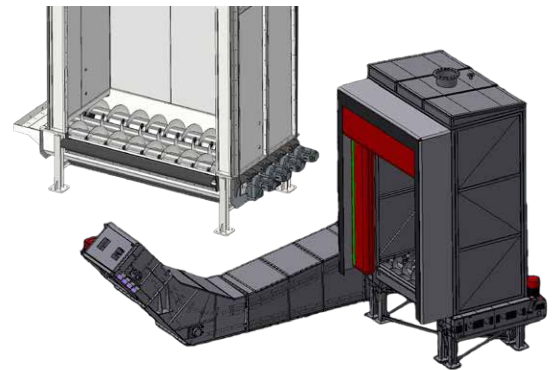


SILO DISCHARGE MACHINE

WTW's Rotary Discharge Machine (SDM) is the most versatile and flexible discharge system. When silo shape and design are not enough, mechanical discharge is necessary to achieve flow. Discharge is achieved by the rotating discharge arm, extracting a uniform disc of material, achieving mass flow, and eliminating material buildup. Available in sizes from 1.5 to 6 meters in diameter and flow rates up to 900 t/h.

TRAILER DOCKING STATION

The WTW Americas Trailer Docking Station (TDS) is a modular design with small dimensions, which requires minimal site prep, no pit, and no underground hopper. It is easy to install and a functional and economical solution for unloading trucks with walking floor trailers which typically carry bulk materials such as wood chips, sawdust, wood waste, alternative fuels, RDF, Fluff, Municipal solid wastes, and many other lighter density fuels. A double docking station alternative with two reception units allows either simultaneous discharge of two trailers or interruption free in-feed.



SWEEPING AUGER

WTW's Sweeping Auger provides flows of lighter density material such as woodchips, sawdust, industrial minerals, corn meal, and other agricultural products of varying consistency. Our Sweeping Auger is used to reclaim alternative fuels, and has proven as a key piece of equipment in ensuring smooth, free-flowing material handling. The Sweeping Auger can discharge from silos with a diameter between 4 to 25 meters and a discharge capacity from 1 to 300 m³/h.

YOUR BULK MATERIAL HANDLING EXPERTS!

FOR ADDITIONAL INFORMATION PLEASE CONTACT OUR OFFICES.